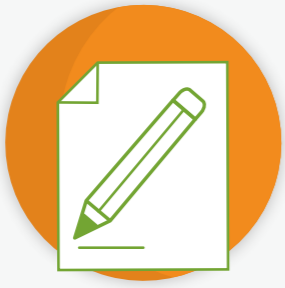


# HOW TO SUBMIT YOUR OER TO THE NATIONAL RESOURCE HUB



Have you developed an Open Educational Resource (OER) you would like to share in the National Resource Hub?

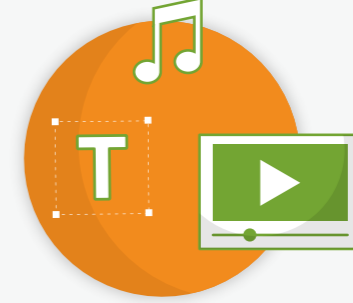
It's always good to reflect and consider your OER.



Is it in an **editable** format (e.g. .docx, .pptx)? You are welcome to submit both the final and an editable version as a supplementary file.



Have you applied a Creative Commons **open license**?



Have you thought about how to make your OER more **accessible** (for example closed captioning, text transcript, or an accompanying audio version of a video file)?



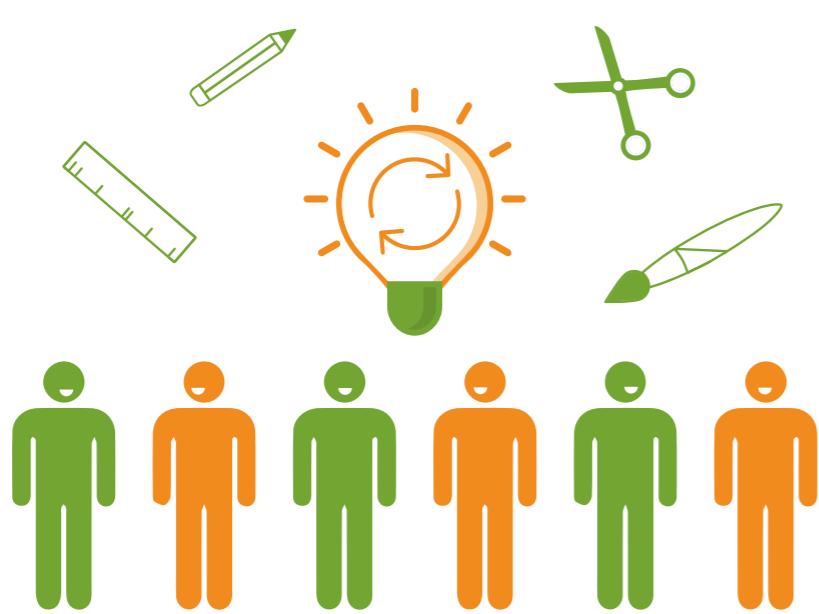
Are there **supplementary files** which may support your OER? You can submit these also.



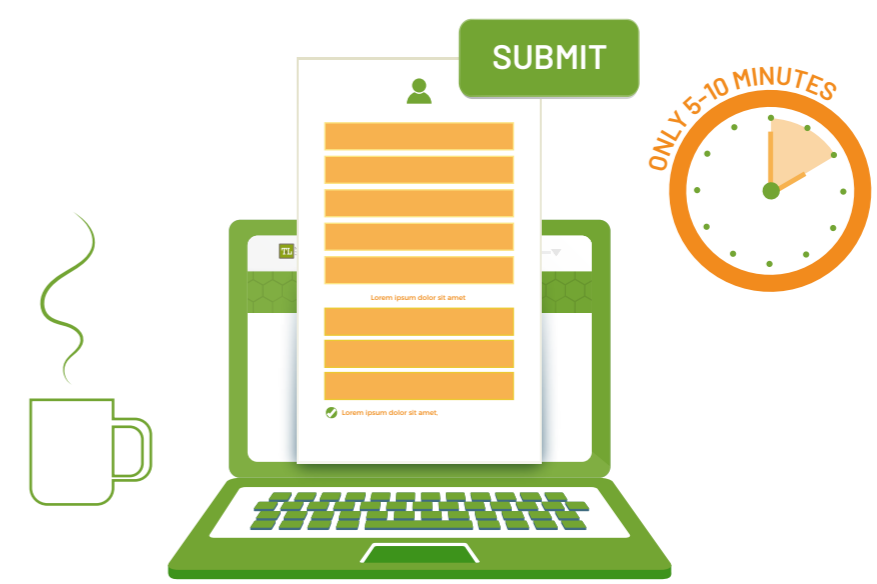
Have you ensured that you have permission for any **personal data** included in your OER?

In the submission space, **our supports and guides** are there to help you with the following:

- What is an OER?
- Choosing an open license
- Applying an open license
- Being copyright aware
- Making your resource more accessible
- The National Forum Open Licensing Toolkit



The primary goal is for OER to be **beneficial for others to use, adapt and learn from.**



Once you create a National Resource Hub **user account**, you will be able to **submit your OER via a short online submission form**, which takes 5-10 minutes to complete.



**WE NEED YOUR HELP!**

When submitting, you will be able to:

- ✓ **describe**
- ✓ **tag**
- ✓ **categorise your OER**

Ensuring you complete these steps will enhance the success of your OER appearing in relevant search results.



To submit your OER to the National Resource Hub, visit [www.teachingandlearning.ie](http://www.teachingandlearning.ie)

#NFresources