

## Learning Analytics Features in Blackboard

### 1. Introduction

Patrick Walsh of DIT has compiled an exhaustive suite of Blackboard resources that show the many features within the VLE that can be used to provide lecturers with data-driven insight into their students' activities and learning behaviours. These can be used to identify students that may need additional support and to enable lecturers to provide timely and targeted support, resources and guidance.

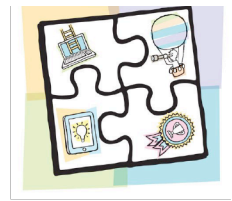
This guide gives a brief overview of three key Blackboard features, namely Module Reports, the Performance Dashboard and the Retention Center, but interested parties are strongly recommended to visit Patrick's site at <https://webcoursesanalytics.wordpress.com/workshop/> to see the full suite of resources.

Users are reminded that all of the student data available within all VLEs counts as personal information and is subject to Data Protection legislation. Users must ensure that they are familiar with their rights and responsibilities under this legislation before accessing or using this data. Further information on Data Protection and its impact on Learning Analytics is available in ORLA.

### 2. Module Reports

Module Reports enable instructors to generate reports about course usage and activity. They are accessed via the Evaluation link under the Control Panel on the home page. The available reports include:

- **All User Activity Inside Content Areas**  
This report provides a summary of all student activity in the module's Content Areas, enabling lecturers to identify which resources students use most.
- **Course Activity Overview & Overall Summary of Student Activity**  
These reports show when students are most active and the total and average time they spend engaging with each aspect of the module.
- **Course Performance**  
This report shows how each module in Blackboard performs against a given set of goals
- **Student Overview for Single Course**  
This report shows individual students' activity within the module
- **User Activity in Forums**  
This report shows a summary of activity within module forums, enabling lecturers to identify which forums are most popular
- **User Activity in Groups**  
This report shows a summary of activity within module groups, enabling lecturers to identify the groups that are used most often



Further details on accessing and running these reports are available at [https://youtu.be/\\_70B-sSBCHE](https://youtu.be/_70B-sSBCHE)

### 3. Performance Dashboard

The Performance Dashboard provides the instructor with an overview of each student's performance within a Webcourses module.

Using this feature, Instructors can view student's progress and activity in a module such as grades, discussion forum activity and days since the students last accessed the module etc.

Performance Dashboard										
Last Name	First Name	Username	Role	Last Course Access	Days Since Last Course Access	Review Status	Adaptive Release	Discussion Board	Customize Retention Center	View Grades
Dubois	Alyssa	adubois	Student	Feb 15, 2013 12:01:31 PM	4	0		3	3/5	
Farrell	Andy	afarrell	Student	Feb 18, 2013 1:26:48 PM	1	0		3	1/5	
Cooper	Ashby	acooper	Student	Feb 19, 2013 9:21:39 AM	0	0		0	1/5	
Lopez	Bruce	blopez	Student	Feb 19, 2013 9:23:47 AM	0	0		1	1/5	

Figure 1 Blackboard Performance Dashboard (from: [https://help.blackboard.com/Learn/Instructor/Performance/Performance\\_Dashboard](https://help.blackboard.com/Learn/Instructor/Performance/Performance_Dashboard))

Further information on the Performance Dashboard is available at:

- [https://help.blackboard.com/Learn/Instructor/Performance/Performance\\_Dashboard](https://help.blackboard.com/Learn/Instructor/Performance/Performance_Dashboard)
- <https://youtu.be/tvd7gIHUfEA>

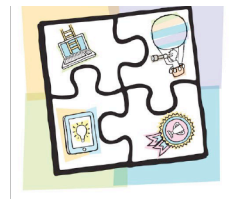
### 4. Retention Center

Blackboard's Learn 9.1 has an inbuilt early warning system entitled Retention Center.

Using Retention Center, academic staff can identify and communicate with at-risk students, providing additional support where required.

The system categorises at-risk students based on four factors. These are:

- Missed deadlines



ORLA: Online Resource for Learning Analytics | <http://tinyurl.com/NFORLA>

- Grades
- Module activity
- Module access

Using preconfigured rules and rules created by the course lecturer a visual representation of student engagement and participation is presented to the instructor based on these four categories.

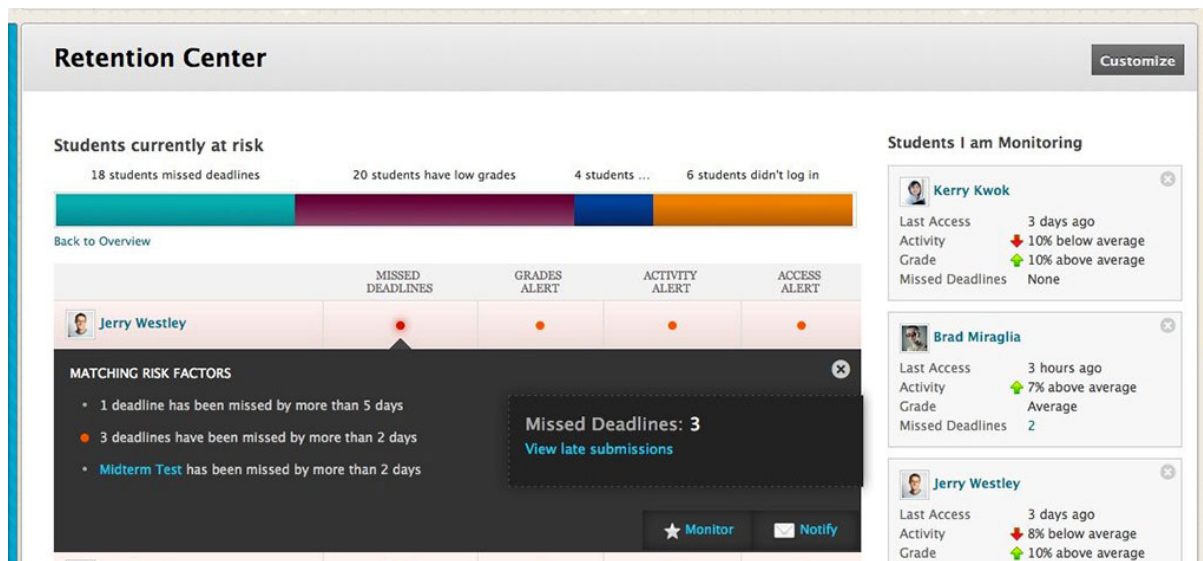


Figure 2 Blackboard Retention Center from:  
<http://www.blackboard.com/sites/new-for-learn/>

Further information on the Retention Center feature is available at  
<https://youtu.be/ECYwy8TSEJA>