

Irish Data Management & Reporting Case Studies

In order to give a sense of the developments in LA capacity currently underway in Irish HEIs, a number of institutions that have been involved in the National Forum project, were invited to submit brief descriptions of their current platforms and/or capabilities. This is a representative, not an exhaustive, list which may be of benefit to institutions that are interested in further developing their own data management capacity

1. Infohub – University College Dublin

UCD has been following a strategy in relation to management information for the past 5 years supported by a custom-built tool called InfoHub. The key components of InfoHub are:

- Strong focus on the integration of data across all key business domains, including student, HR, finance and research data.
- Provision of a consistent user experience which is easy to use for users across all information domains. An important aspect of this user experience is speed ... enabling users to access most data within 5 seconds.
- Provision of primarily real-time information, though there are some specific instances where it is more appropriate to show snapshots of information.
- Close partnership with both the data owners and the information consumers to define, develop, rollout and support new reports. An emphasis is on ensuring that there is a consistent range of information available at operational and management levels across all information domains.
- Strong security and access control to ensure that only those authorized to see data, can access it. In most cases, this authorization is linked to the role of the individual or managed by the owners of the data.

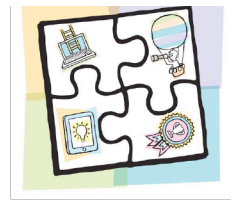
contributed by mark.lande@ucd.ie

2. National College of Ireland

The National College of Ireland (“NCI”) has been utilising Learning Analytics for a period of 3 years now in a bid to combat poor progression rates and aid retention. Initially developed using a limited attendance monitoring tool – the National College of Ireland is currently investing significant time and resources in developing a system which can assist College staff in monitoring the overall engagement of our student body.

From internal research – it has become clear that poor attendance was an early stage indicator of a student at risk of withdrawal or exam failure. With that in mind – the college requires all students to scan into classes and using this data – along with other sources of information such as exam results, interaction with the Virtual Learning Environment – interactions / interventions are then staged with at risk students through email, text, phone calls or face to face meetings. At the moment – this integration of data is done manually – however a plan is currently underway to bring this into a more automated format.

These interventions are coordinated through the Learning and Teaching Office at NCI and while they are resource intensive but have proved to be quite successful in stemming early stage withdrawals over the previous 3 years especially in the 1- and 2-



ORLA: Online Resource for Learning Analytics | <http://tinyurl.com/NFORLA>

year cohorts of undergrad students. NCI have also found them to be exceptionally useful in identifying students where personal, financial or medical issues are affecting a full engagement with their course of study. After 3 years in operation - NCI are now starting to see those students that were identified through these monitoring tools graduating.

Moving forward – NCI are seeking to fully automate their engagement platform by combining all sources of data across one single platform to create an engagement dashboard. This is not without its own challenges as NCI has discovered along the way but in the long run – the benefits of such a learning analytics system will prove particularly beneficial.

Contributed by Jonathan Lynch

3. Enterprise Reporting Portal - CIT

In 2014 a 3rd party vendor was engaged to assist with the delivery of a new Enterprise Reporting Portal in CIT and also the further development of new data sets into our data warehouse. As the institute already had a large footprint on SharePoint, it was decided that the portal leverage this technology and the main elements of same included:

- SharePoint libraries/dashboards/webparts
- Excel Services
- Sql Server Reporting Services
- PowerView
- PowerPivot

The immediate objective was to take a faculty dashboard mocked up by the head of faculty and redevelop this with the new technologies with a view to slicing this report for every head of department, school and faculty across the Institute. A governance group was formed to sign off on the data definitions required for this dashboard and the first consistent set of student retention data was delivered to the Faculty of Engineering and Science as the pilot phase of the project. This was kept very simple and the dashboard was made very interactive and intuitive eliminating the need for any technical skills for end users. This solution was first launched in late 2014 with the high level design as shown in the figure below.

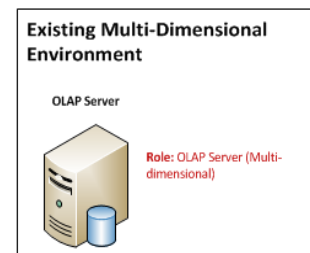
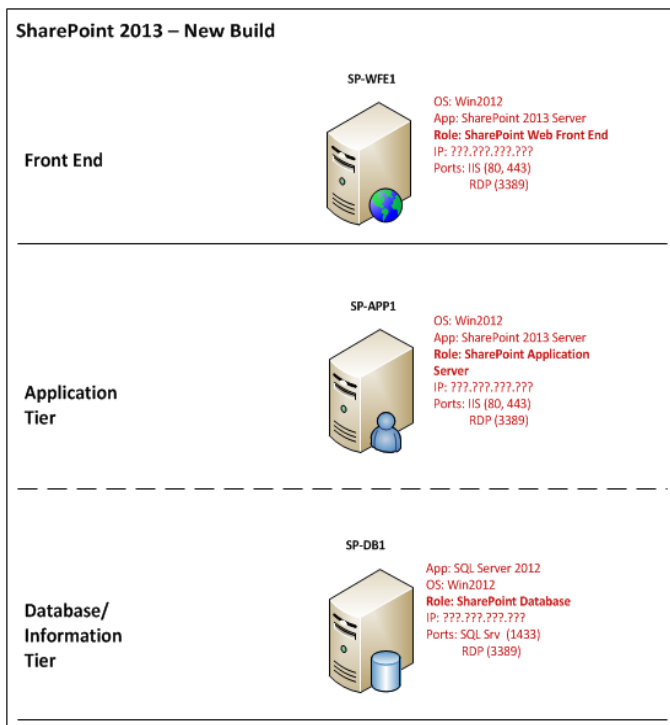
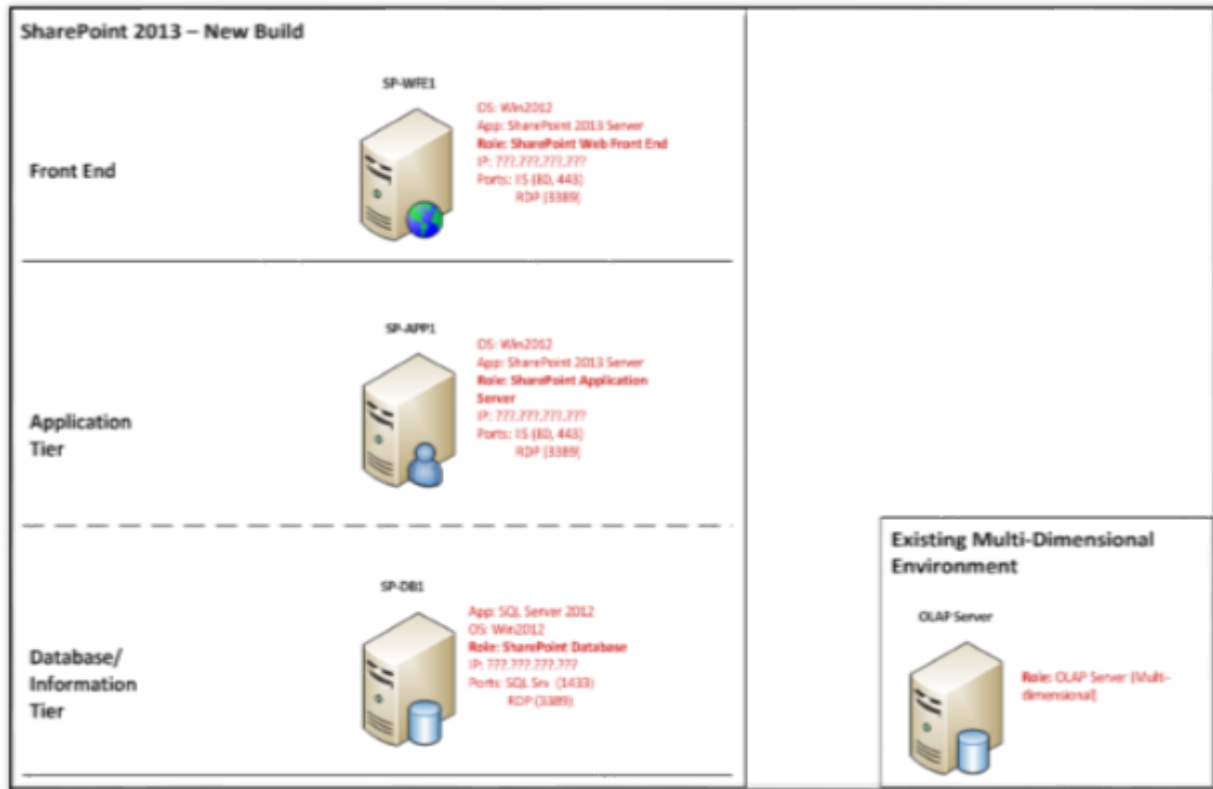
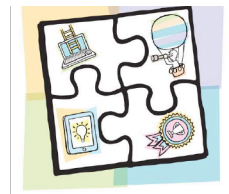
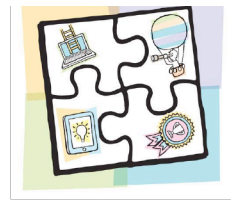


Figure 1: Sharepoint



4. GURU Platform - DCU

Guru is a “student information platform”, developed at Dublin City University. The purpose of the platform is to harness existing institutional data in order to build systems aimed principally at academic members of staff. The core system not only facilitates the presentation of student information in an efficient and user-friendly manner, but also provides a platform for the development of a number of sub-systems. These systems relate to providing student learning analytics, digital examination paper processing, management of personal tutees, student project allocation, accreditation and exam board processing. Further systems are at various stages of planning.

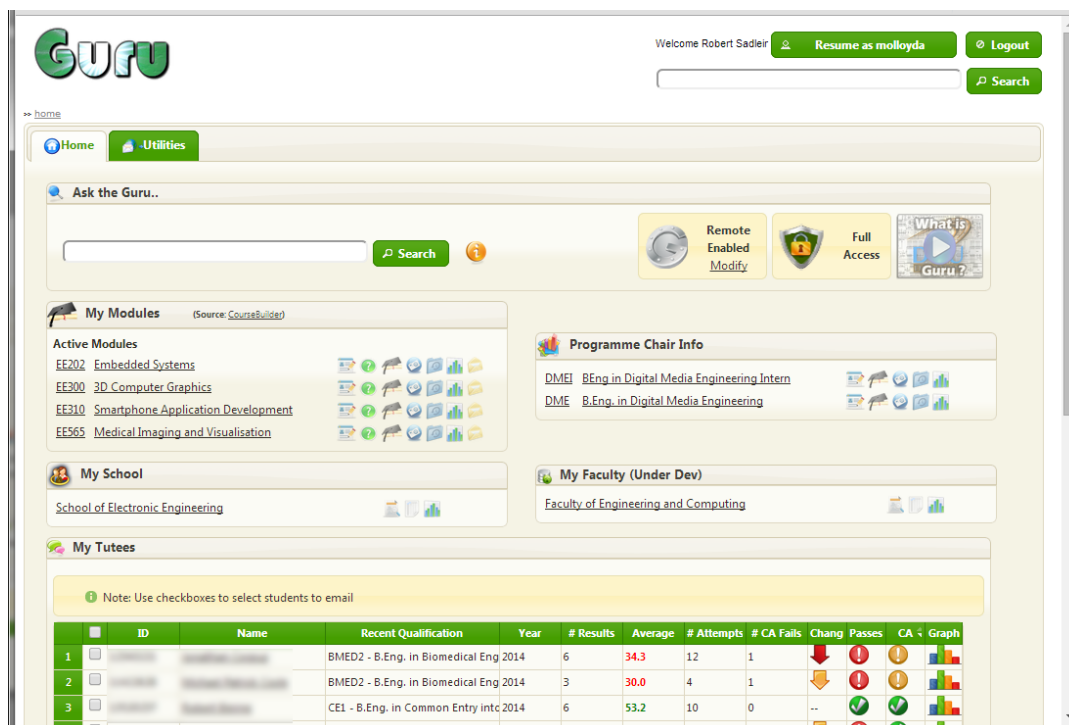
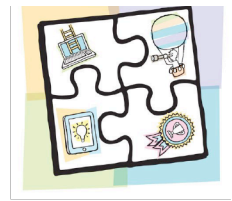


Figure 2: Sample Home Page for an academic using Guru

From a learning analytics perspective, a number of graphs are made available to staff members, such as:

- Student performance over time
- Module Comparative Difficulty (Linear Regression Graph based on averages)
- Student Retention Graphs (showing graduations and withdrawals)
- Traffic Light Warnings for Personal Tutees
- Grade Inflation over Time
- Module Pass/Fail Rates/Mark Clustering



5. Student IT Helpdesk Interface - UCC

In 2016, UCC implemented a multi-source reporting interface for our Student IT helpdesk. It gathers a snapshot of a student's digital footprint on a single page, pulling data from multiple systems, including:

- Student Records (ITS): lists basic biographical and registration data, and lists the last time they attempted to log in.
- Active Directory: Confirms that the students account is active on Active Directory, when they last changed their password, whether they have a license to use Office 365.
- Blackboard: Lists the date of last login, and the modules they are enrolled in, and compares this to the registration data from the student records system
- Eduroam (Wifi): Lists the most recent log entries for that student
- Edugate: Lists the most recent log entries for that student

The primary purpose of the tool is to support our IT helpdesk. When a student reports a technical difficulty, this is a single place where the support team can review all relevant data and log files.

The tool uses a number of methodologies to gather the data. Direct database queries, textual analysis of log files, and ldap queries. Some data is live, and others are delayed by 10 mins or 24 hours depending on where the data is coming from. Each report is very bespoke to the application/service it is reviewing.

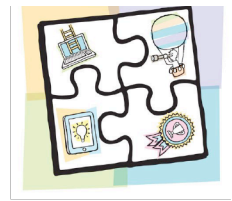
Contributed by tim.odonovan@ucc.ie

6. Student Engagement Analytics & IAN - UCD

UCD began developing its learning analytics capacities in 2011 with Student Engagement Analytics, a bi-semester report, housed in MS Excel, that enabled Programme Offices to identify students who may in need of targeted support.

In format, it was an Excel report distributed by UCD Registry at the middle and end of each semester, that listed a large amount of data for each undergraduate student. The primary sources of data were the Student Information System and the VLE. Data about the students' registration, workload, grade breakdown and VLE hits (both in isolation and in relation to their peer group average) were included. It took one person approximately two days to compile and distribute the report.

In addition to the raw data, key filters were also included that enabled the quick identification of students with records of particular interest to the user. These filters were banded for ease of use. For example, grade data was broken into categories such as 'Failed all assessments', 'Passed majority of assessments' etc. VLE hits were broken into categories denoting activity relative to their peers (eg '0 VLE hits', '1-20% of peer average', '>80% of peer average' etc).



ORLA: Online Resource for Learning Analytics | <http://tinyurl.com/NFORLA>

Although this was a low tech system, it provided support staff with valuable, actionable insights at key points during the year. Because it was housed in MS Excel, no developers or bespoke software purchases were necessary.

Based upon the potential realised by Student Engagement Analytics, IAN (Integrated Assistance Nexus) was developed in 2014. IAN is a dynamic suite of online reports, developed within UCD and housed in Infohub. All data listed in IAN is pulled from the SIS database in real time, apart from VLE hits which are extracted and updated in IAN nightly.

IAN was designed to be user-friendly so it combines approximately 15,000 pieces of data on each student into five flags which were chosen in collaboration with student support staff as potentially identifying students that may need support. The report can be sorted by flag count, thereby enabling easy identification of students with issues across a range of criteria including engagement, performance and workload.

Contributed by jeremy.britton@ucd.ie